

# Molecular clock dating using MrBayes

ZHANG Chi<sup>1,2</sup>

(1 *Key Laboratory of Vertebrate Evolution and Human Origins of Chinese Academy of Sciences, Institute of Vertebrate Paleontology and Paleoanthropology, Chinese Academy of Sciences* Beijing 100044 zhangchi@ivpp.ac.cn)  
(2 *CAS Center for Excellence in Life and Palaeoenvironment* Beijing 100044)

**Abstract** This paper provides an overview and a protocol of molecular clock dating using MrBayes. Two modern approaches, total-evidence dating and node dating, are demonstrated using a truncated dataset of Hymenoptera with molecular sequences and morphological characters. The similarity and difference of the two methods are compared and discussed. Besides, a non-clock analysis is performed on the same dataset to compare with the molecular clock dating analyses.

**Key words** Bayesian phylogenetic inference, molecular clock dating, MCMC, MrBayes

**Citation** Zhang C, 2019. Molecular clock dating using MrBayes. *Vertebrata Palasiatica*, 57(3): 241–252

## 1 Introduction

MrBayes is a software for Bayesian phylogenetic inference (Huelsenbeck and Ronquist, 2001; Ronquist and Huelsenbeck, 2003) and has become widely used by biologists (Van Noorden et al., 2014). Many new features have been implemented since version 3.2 (Ronquist et al., 2012b), including species tree inference under the multi-species coalescent model (Liu, 2008; Liu et al., 2009); compound Dirichlet priors for branch lengths (Rannala et al., 2012; Zhang et al., 2012); marginal model likelihood estimation using stepping-stone sampling (Xie et al., 2011); topology convergence diagnostics using the average standard deviation of split frequencies (Lakner et al., 2008); BEAGLE library support (Ayres et al., 2012) and parallel computing using MPI (Altekar et al., 2004).

In addition to these features, the focus of this study is its new functionality of divergence time estimation using node dating (Yang and Rannala, 2006; Ho and Phillips, 2009) and total-evidence dating (Ronquist et al., 2012a; Zhang et al., 2016) approaches under relaxed molecular clock models (Huelsenbeck et al., 2000; Thorne and Kishino, 2002; Drummond et al., 2006; Lepage et al., 2007). Both dating techniques are implemented in the Bayesian framework, such that the diversification process and the fossil information are incorporated in the priors. However, they do have significant differences. In node dating, only molecular sequences from extant taxa are used, and one or more internal nodes of the extant taxon tree

中国科学院率先行动百人计划青年俊才(C类)和中国科学院战略性先导科技专项(B类) (编号: XDB26000000) 资助。

收稿日期: 2019-01-14

are calibrated by user-specified prior distributions, typically derived from the fossil record, to estimate the ages of all other nodes in the tree. In total-evidence dating, extant and extinct taxa are all included in the tree, and morphological characters are coded for fossil and extant taxa in a combined matrix with molecular sequences. The age of each fossil is assigned a prior distribution directly.

Several steps are involved in a Bayesian molecular clock dating analysis, importantly including partitioning the data, specifying evolutionary models, calibrating internal nodes or fossils, and setting priors for the tree and the other parameters. In this paper, I introduce a general clock dating protocol that could potentially be applied to a wide range of taxonomic groups, using a truncated Hymenoptera data as an example.

The original data analyzed by Ronquist et al. (2012a) and Zhang et al. (2016) includes 60 extant and 45 fossil Hymenoptera (wasps, ants, and bees) and eight outgroup taxa. The data were divided into eight partitions as follows: 1) morphology, 2) 12S and 16S, 3) 18S, 4) 28S, 5) 1<sup>st</sup> and 2<sup>nd</sup> codon positions of CO1, 6) 3<sup>rd</sup> codon positions of CO1 (but not used in the analyses), 7) 1<sup>st</sup> and 2<sup>nd</sup> codon positions of both copies of EF1 $\alpha$ , and 8) 3<sup>rd</sup> codon positions of both copies of EF1 $\alpha$ . These are based on morphological characters, mitochondrial and nuclear genes. The full data takes days to run. For illustrative purposes, the data is truncated into ten extant taxa (nine Hymenoptera and one Raphidioptera) and ten fossils, with 200 morphological characters, 100 sites from 16S, and 210 sites from EF1 $\alpha$ . Below, the dataset is analyzed by both total-evidence dating and node dating approaches under diversified sampling of extant taxa (Höhna et al., 2011; Zhang et al., 2016), followed by a non-clock analysis under the compound Dirichlet prior for branch lengths (Rannala et al., 2012; Zhang et al., 2012).

## 2 Protocol

### 2.1 MrBayes installation

The program MrBayes is available from GitHub (<https://github.com/NBISweden/MrBayes>), including pre-compiled executables for macOS and Windows, and source code for all platforms. The current version is 3.2.7, which is used here. The truncated dataset `hym.nex` is in the `doc/tutorial` folder within the release. For convenience, it is recommended to put it in the same directory as the executable (e.g., named `mb` in macOS/Linux or `mb.exe` in Windows). The file `hym.nex` in the NEXUS format can be opened by a text editor or a matrix editor such as Mesquite (<https://www.mesquiteproject.org>). The data matrix is at the beginning, including morphological characters and molecular sequences. Following the data block, users can write MrBayes commands within the `mrBayes` block (each ends with a semicolon). These commands will be executed automatically when the data is read in. The texts within a pair of square brackets are comments and will be ignored by the program.

In terminal (macOS/Linux) or command prompt (Windows), navigate to the folder containing the executable and data file using the `cd` command, and launch MrBayes using `./`

mb (macOS/Linux) or mb.exe (Windows). The following header will appear.

```
MrBayes 3.2.7 x86_64
(Bayesian Analysis of Phylogeny)
Distributed under the GNU General Public License
MrBayes >
```

The prompt at the bottom means that MrBayes is running and ready for your commands. Simply use

```
execute hym.nex
to read in the data.
```

## 2.2 Data partitions

When the data is read in, the commands for defining the partitions are also executed.

```
charset MV = 1-200
charset 16S = 201-300
charset Ef1a = 301-510
charset Ef1a12 = 301-510\3 302-510\3
charset Ef1a3 = 303-510\3
partition four = 4: MV, 16S, Ef1a12, Ef1a3
set partition = four
```

Here we define four partitions: the morphology (MV), 16S, 1<sup>st</sup> and 2<sup>nd</sup> codon positions of EF1 $\alpha$  (Ef1a12), and 3<sup>rd</sup> codon positions of EF1 $\alpha$  (Ef1a3). The name “four” is user defined and can be any other string. Note the semicolon (;) at the end of each command is neglected as the command is supposed to be typed after the MrBayes prompt (a semicolon is necessary when the command is written in a file, the same below).

## 2.3 Substitution models

For the morphological partition, the Mkv model (Lewis, 2001) is used with variable ascertainment bias (only variable characters scored), equal state frequencies and gamma rate variation across characters.

```
lset applyto = (1) coding = variable rates = gamma
```

Constant characters will be excluded automatically by the program. To be specific, use the following command to exclude them.

```
exclude 7 31 61 83 107 121 122 133 182 183 198
```

If instantaneous change is only allowed between adjacent states (e.g., 0 $\leftrightarrow$ 1 and 1 $\leftrightarrow$ 2 but not 0 $\leftrightarrow$ 2), these characters are specified using this command.

```
ctype ordered: 20 23 27 30 36 41 42 44 46 48 59 65 75 78 79 89
99 112 117 134 146 157 159 171 185 191 193 196
```

The other characters are thus unordered which can change instantaneously from one state to another. Dollo or irreversible character is not supported in MrBayes at the moment.

For the molecular partitions, the general time-reversible model is used with gamma rate

variation across sites (GTR+ $\Gamma$ ) (Yang, 1994a,b).

```
lset applyto = (2,3,4) nst = 6 rates = gamma
```

The prior for the gamma shape parameter is exponential(1.0), which can be changed using `prset shapepr`. We keep the default here.

Different partitions are assumed to have independent substitution parameters, thus we unlink them. The partition-specific rate multipliers are used to account for rate variation across partitions with average to 1.0.

```
unlink statefreq = (all) revmat = (all) shape = (all)
prset applyto = (all) ratepr = variable
```

## 2.4 Relaxed clock models

The relaxed clock models account for evolutionary rate variation over time and among branches, and it is now a standard practice to accommodate such variation in dating analyses. There are three relaxed clock models implemented in MrBayes: compound Poisson process (CPP; Huelsenbeck et al., 2000), autocorrelated lognormal (TK02; Thorne and Kishino, 2002) and independent gamma rate (IGR; Lepage et al., 2007). However, the CPP model is computationally not compatible with total-evidence dating, thus we only focus on the IGR and TK02 models. The outcomes of using these two models are discussed below.

The mean clock rate (mean substitution rate per site per Myr) is assigned a lognormal(-7, 0.6) prior, with mean 0.001 and standard deviation 0.0007.

```
prset clockratepr = lognorm(-7,0.6)
```

The prior is chosen by comparing the age of the oldest insect fossil with the root age estimation from uncalibrated clock analysis as discussed in Ronquist et al. (2012a). One might need to specify a different suitable distribution. There are several options for the clock rate prior, including fixed, normal (truncated at zero), lognormal, and gamma. The probability

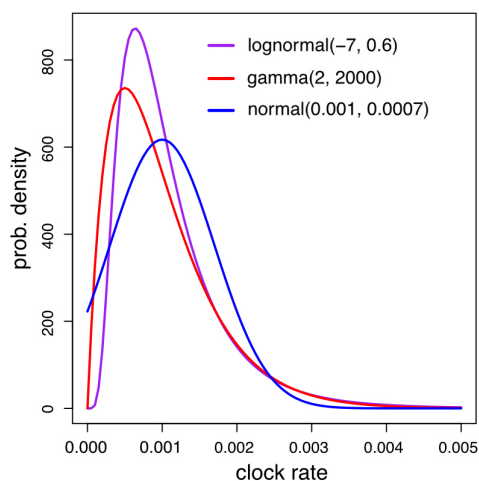


Fig. 1 Probability density functions of lognormal, gamma, and normal distributions, all with mean 0.001 and standard deviation 0.0007

density functions (all with mean 0.001 and standard deviation 0.0007) are shown in Fig. 1. The differences in this case are minor.

The relative clock rates, which are multiplied by the mean clock rate, vary differently along the branches of the tree in different models. The TK02 model assumes that the relative rate changes along the branches as Brownian motion on the log scale, starting from 1.0 (0.0 on the log scale) at the root. The rate at the end of a branch is lognormally distributed with mean equal to the rate at the beginning of the branch. Thus the rates at different branches are autocorrelated.

```
prset clockvarpr = tk02
prset tk02varpr = exp(1)
```

The IGR model assumes that the relative rate at each branch is an independent gamma distribution with mean 1.0. The variance is proportional to the branch length. Thus the rates are independent of each other (but not identically distributed).

```
prset clockvarpr = igr
prset igrvarpr = exp(10)
```

Note that when the relative rates are all fixed to 1.0 in the TK02 or IGR model, it becomes the strict clock model.

Before the total-evidence dating and node dating analyses, we first define the fossil taxa and some constraints for later use. Note these constraints are not enforced until we set topologypr explicitly (see below).

```
taxset fossils = Asioxyela Nigrimonticola Xyelotoma Undatoma
Dahuratoma Cleistogaster Ghilarella Mesorussus Prosyntexis
Pseudoxyelocerus
constraint HymenFossil = 2-.
constraint Hymenoptera = 2-10
constraint Holometabola = 1-10
constraint Tenthredinidae = 3-5
constraint CepSirOruApo = 7-10
```

The numbers here refer to the taxon numbers ordered as in the data matrix, while a dot (.) means the last taxon.

## 2.5 Total-evidence dating

In the following, we assign priors for the fossils from the geological times. This is a typical step in total-evidence dating, where we calibrate the fossil taxa instead of the internal nodes of the tree. Fossil age uncertainties are represented as uniform distributions, while fixed values can be used when the geological age is very certain.

```
calibrate
Asioxyela = unif(228,242)
Nigrimonticola = unif(152,163)
Xyelotoma = unif(152,163)
Undatoma = unif(145,152)
Dahuratoma = fixed(134)
Cleistogaster = unif(168,191)
Ghilarella = unif(113,125)
Mesorussus = unif(94,100)
Prosyntexis = unif(80,86)
Pseudoxyelocerus = fixed(182)
prset nodeagepr = calibrated
```

To enable the calibrations, the last nodeagepr command must be present.

The speciation, extinction, fossilization, and sampling process is explicitly modeled using the fossilized birth-death (FBD) process (Stadler, 2010; Heath et al., 2014; Gavryushkina et al., 2014; Zhang et al., 2016).

```
prset brlenspr = clock:fossilization
```

Diversified sampling (Zhang et al., 2016) is arguably suitable for such higher-level taxa, which assumes exactly one representative extant taxa per clade descending from time  $x_{cut}$  is sampled, and the fossils are sampled with a non-zero rate before  $x_{cut}$  and zero after. A fossil can be either a tip or a sampled ancestor (Fig. 2).

```
prset samplestrat = diversity
```

By default, the sampling strategy for extant taxa is uniformly at random (`samplestrat = random`) which is not used here, but see Zhang et al. (2016) for the application.

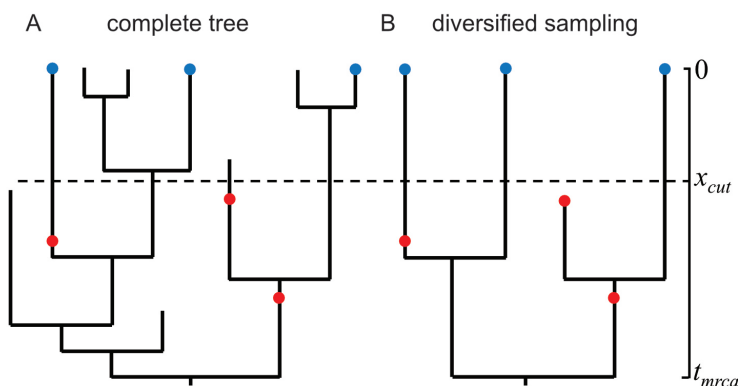


Fig. 2 The fossilized birth-death (FBD) process and diversified sampling of extant taxa. Exactly one representative taxa per clade descending from time  $x_{cut}$  is sampled (blue dots). The fossils are sampled with a constant rate between  $t_{mrca}$  and  $x_{cut}$  (red dots).

The model has four parameters: speciation rate  $\lambda$ , extinction rate  $\mu$ , fossil discover rate  $\psi$ , and extant sample proportion  $\rho$ . For inference, we re-parametrize the parameters as  $d = \lambda - \mu$ ,  $r = \mu / \lambda$ , and  $s = \psi / (\mu + \psi)$ , so that the latter two parameters range from 0 to 1.  $\rho$  is fixed to 0.0001, based on the living number of Hymenoptera at about 100000 ( $10/100000 = 0.0001$ ).

```
prset sampleprob = 0.0001
prset speciationpr = exp(10)
prset extinctionpr = beta(1,1)
prset fossilizationpr = beta(1,1)
prset treeagepr = offsetexp(300,390)
```

The FBD prior is conditioned on the root age ( $t_{mrca}$ ). Here we use an offset exponential distribution with minimal age 300 Ma (according to the oldest neopteran fossil) and mean age 390 Ma (the oldest insect fossil). Users should specify a reasonable root age prior according to the available fossil information. Several available probability densities all with mean 390 and minimal 300 are shown in Fig. 3. The exponential prior is more diffused than the rest three.

An alternative tree prior that can be used in the total-evidence dating approach is the

uniform prior (`clock:uniform`) (Ronquist et al., 2012a). It assumes that the internal nodes are drawn from uniform distributions and the fossils are only tips of the tree (so-called tip dating). Similarly to the FBD prior, the uniform prior is also conditioned on the root age and requires setting `treeagepr`.

In order to root the tree properly, we enforce the constraint `HymenFossil` defined above. This forces the Hymenoptera with fossils to form a monophyletic group.

```
prset topologypr =
constraint(HymenFossil)
```

For the Markov chain Monte Carlo (MCMC) (Metropolis et al., 1953; Hastings, 1970), we use two independent runs and four chains (one cold and three hot) per run for 500000 iterations and sample every 100 iterations.

```
mcmcpr nrun = 2 nchain = 4 ngen = 500000 samplefr = 100
mcmcpr filename = hym.te printfr = 1000 diagnfr = 5000
mcmc
```

The output file names all start with `hym.te` (represented as `hym.te.*`). The chain states are printed to screen every 1000 iterations, and the convergence diagnostics are printed every 5000 iterations. The `mcmc` command executes the MCMC run.

While the MCMC is running, the iteration number, likelihood values, and average standard deviation of split frequencies (ASDSF) are printed to the screen. The ASDSF should be decreasing toward 0, indicating the tree topologies sampled from the two different runs are getting similar and converging to the same (stationary) distribution. Typically,  $ASDSF < 0.01$  is a good sign of consistency between runs.

To summarize the parameters and trees after the MCMC, use

```
sump
sumt
```

By default, the first 25% samples are discarded as burnin. This can be adjusted according to the likelihood traces from the two runs (e.g. viewed in Tracer). The effective sample size (ESS) is an important indicator to judge if sufficient MCMC samples are collected. Ideally, the ESS should be larger than 100 for all parameters. We may need to increase the chain length and adjust MCMC proposals to improve the estimates.

The consensus tree including all fossils is highly unresolved due to the uncertainty in the placement of the fossils. In order to display the node ages clearly, we can redraw an extant taxa tree by pruning the fossils. The output filename is changed to avoid overwriting the existing ones.

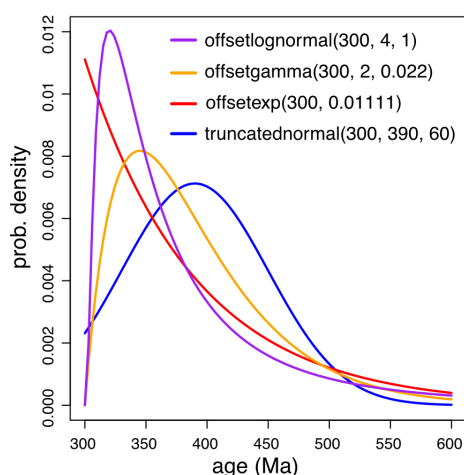


Fig. 3 Probability density functions of offset lognormal, offset gamma, offset exponential, and truncated normal distributions, all with mean 390 and minimum 300

```
delete fossils
sumt output = hym.rf
```

Note here this `sumt` command does not rerun the MCMC but just for displaying the extant taxon tree.

## 2.6 Node dating

In node dating, we calibrate the internal nodes of the tree instead of the fossils above. The morphological characters of the fossils are not used, thus we remove them.

```
delete fossils
exclude 24 130 168
calibrate
  Tenthredinidae = offsetgamma(100,150,25)
  CepSirOruApo = truncatednormal(140,175,25)
prset nodeagepr = calibrated
```

The birth-death prior under diversified sampling (Höhna et al., 2011) is used for the time tree. Compared to the FBD prior used above, there is no fossil sampling parameter in this case. The priors for the root age, speciation and extinction rates are not changed.

```
prset brlenspr = clock:birthdeath
prset samplestrat = diversity
prset sampleprob = 0.0001
prset speciationpr = exp(10)
prset extinctionpr = beta(1,1)
prset treeagepr = offsetexp(300,390)
```

The uniform tree prior (`clock:uniform`) is also applicable.

It is important to force the calibrated clade to be monophyletic and enable the constraints. The constraint `Hymenoptera` helps to root the tree properly.

```
prset topologypr = constraint(Hymenoptera, Tenthredinidae,
CepSirOruApo)
```

The output filename is changed to avoid overwriting the existing ones. If the node dating analysis is continued after the total-evidence dating in the same MrBayes session, the starting values also need to be reset. The other settings are kept the same as in the total-evidence dating analysis.

```
mcmc filename = hym.nd startp = reset startt = random
```

## 2.7 Non-clock analysis

Lastly, we run an analysis without the molecular clock assumption and calibrations. The branch lengths are measured by genetic distance (expected substitutions per site). This is a typical analysis most people do using MrBayes. We do not use fossils, and do not constrain the topology so that they are uniformly distributed.

```
delete fossils
prset brlenspr = uncons:gammdir(1,1,1,1)
```



```
prset topologypr = uniform
mcmc filename = hym.un
sump
sumt
```

The prior for branch lengths is gamma-Dirichlet(1, 1, 1, 1) (Rannala et al., 2012; Zhang et al., 2012), which assigns gamma(1, 1) for the tree length and uniform Dirichlet for the proportion of branch lengths. The compound Dirichlet prior was shown to help avoid overestimating the tree length (Zhang et al., 2012) and is now the default prior in MrBayes (since 3.2.3).

### 3 Results and discussion

The posterior estimates of the parameters are summarized in separate files, which can be opened using a text editor. The information is also printed to the screen. The partition rate multipliers are in `hym.*.pstat` (here `*` is to match `te` and `nd`, the same below). The morphologies (`m{1}`) and 16S (`m{2}`) partitions evolve at similar rate. The 1<sup>st</sup> and 2<sup>nd</sup> codon positions of *Efla* (`m{3}`) evolve much more slowly than the 3<sup>rd</sup> codon position (`m{4}`). Thus it is reasonable to take into account such significant rate variation across partitions.

The majority-rule consensus trees are summarized in `hym.*.con.tre`, which can be visualized by FigTree (<http://tree.bio.ed.ac.uk/software/figtree>) or IcyTree (<https://icytree.org>). The node ages are also in `hym.*.vstat`, associated with the bipartition IDs in `hym.*.parts`. The root ID is 0 which includes all taxa, while the ID of Hymenoptera is that which excludes the outgroup Raphidioptera (`.*****`). The extant taxa trees from total-evidence dating and node dating under diversified sampling and IGR clock model are shown in Fig. 4. The topologies are the same in general, except for the *Cephus* and *Sirex* clade. The age of Hymenoptera (250 Ma) inferred from total-evidence dating is similar to that from node dating, but with a relatively narrower HPD interval.

The total-evidence dating approach models the fossilization and sampling process explicitly, and incorporates different sources of information from the fossil record while accounting for the uncertainty of fossil placement. In comparison, the node dating approach discards the fossil morphologies, and relies on secondary interpretation of the fossil record as node calibrations. Total-evidence dating appears more objective and rigorous, and provides an ideal platform for exploring and further improving the models used for Bayesian molecular clock dating analysis.

Comparing the non-clock tree (Fig. 5) with the clock trees (Fig. 4), it is obvious that the evolutionary rate is not constant over time. The *Xyela* and *Onycholyda* branches evolve much more slowly than the Raphidioptera and *Orussus/Vespidae* clade, and there are indeed dramatic rate changes between adjacent branches. In this case, the IGR relaxed clock model is more suitable than the autocorrelated TK02 model, and it is not reasonable to assume a strict clock model. Apart from these perspectives, a more statistically rigorous model selection procedure (e.g., using reversible-jump MCMC or marginal likelihood) needs to be carried out in future studies.

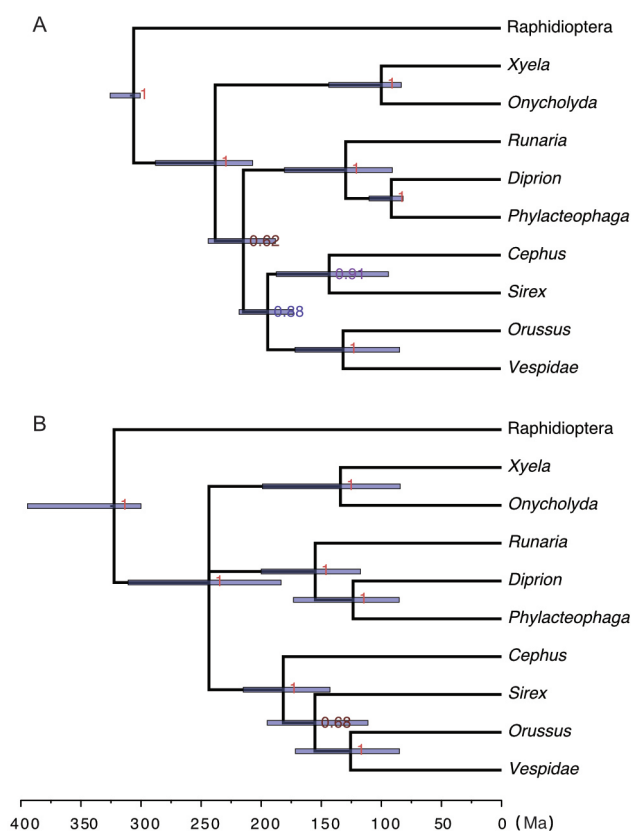


Fig. 4 Majority-rule consensus trees of extant taxa from total-evidence dating (A) and node dating (B), under the diversified sampling and IGR models

The node heights are in units of million years and the error bars indicate the 95% HPD intervals

The numbers at the internal nodes are the posterior probabilities of the corresponding clades

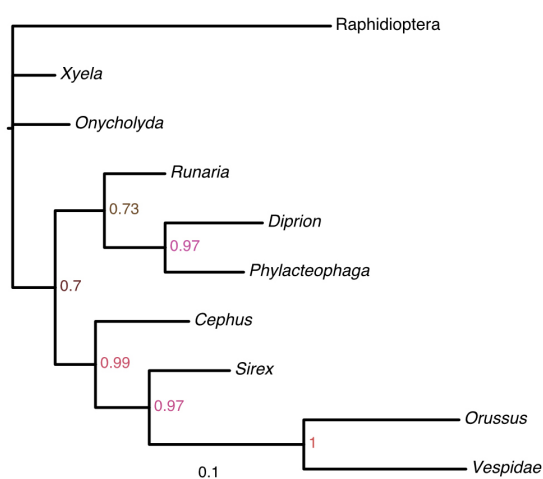


Fig. 5 Majority-rule consensus tree of extant taxa from a non-clock analysis under the gamma-Dirichlet prior

The branch lengths are measured by expected substitutions per site

The numbers at the internal nodes are the posterior probabilities of the corresponding clades

In conclusion, this study provides a brief overview and comparison of total-evidence dating and node dating analyses, and demonstrates the functionality of MrBayes using a truncated dataset of Hymenoptera. For the analyses and discussion using the full data, please see Ronquist et al. (2012a) and Zhang et al. (2016).

**Acknowledgements** I sincerely thank Johan Nylander for valuable discussions and for organizing a workshop of MrBayes using this tutorial in Stockholm, Sweden. I am grateful to Xijun Ni and Rachel C. M. Warnock for insightful review comments. Zhang Chi is supported by the 100 Young Talents Program of Chinese Academy of Sciences and partly supported by the Strategic Priority Research Program of Chinese Academy of Sciences (XDB26000000).

## MrBayes分子钟定年之程序

张 驰<sup>1,2</sup>

(1 中国科学院古脊椎动物与古人类研究所, 中国科学院脊椎动物演化与人类起源重点实验室 北京 100044)

(2 中国科学院生物演化与环境卓越创新中心 北京 100044)

**摘要:** 介绍了利用MrBayes进行分子钟定年的研究概况和程序。利用一个整合分子序列和形态特征的膜翅目昆虫的数据, 展示了两种现代方法: 全证据定年和节点定年, 并对这两种方法的相似点和不同之处进行比较和讨论。此外, 还用无分子钟的方法对同一数据进行分析, 并与分子钟定年法进行比较。

**关键词:** 贝叶斯系统发育推断, 分子钟定年, 马尔可夫链蒙特卡罗, MrBayes

**中国法分类号:** Q91-3      **文献标识码:** A      **文章编号:** 1000-3118(2019)03-0241-12

## References

- Altekar G, Dwarkadas S, Huelsenbeck J P et al., 2004. Parallel Metropolis coupled Markov chain Monte Carlo for Bayesian phylogenetic inference. *Bioinformatics*, 20: 407–415
- Ayres D L, Darling A, Zwickl D J et al., 2012. BEAGLE: an application programming interface and high-performance computing library for statistical phylogenetics. *Syst Biol*, 61: 170–173
- Drummond A J, Ho S Y W, Phillips M J et al., 2006. Relaxed phylogenetics and dating with confidence. *PLoS Biol*, 4: e88
- Gavryushkina A, Welch D, Stadler T et al., 2014. Bayesian inference of sampled ancestor trees for epidemiology and fossil calibration. *PLoS Comput Biol*, 10: e1003919
- Hastings W K, 1970. Monte Carlo sampling methods using Markov chains and their applications. *Biometrika*, 57: 97–109
- Heath T A, Huelsenbeck J P, Stadler T, 2014. The fossilized birth-death process for coherent calibration of divergence-time estimates. *Proc Natl Acad Sci USA*, 111: e2957–2966
- Ho S Y W, Phillips M J, 2009. Accounting for calibration uncertainty in phylogenetic estimation of evolutionary divergence times. *Syst Biol*, 58: 367–380

- Höhna S, Stadler T, Ronquist F et al., 2011. Inferring speciation and extinction rates under different sampling schemes. *Mol Biol Evol*, 28: 2577–2589
- Huelsenbeck J P, Larget B, Swofford D L, 2000. A compound Poisson process for relaxing the molecular clock. *Genetics*, 154: 1879–1892
- Lakner C, van der Mark P, Huelsenbeck J P et al., 2008. Efficiency of Markov chain Monte Carlo tree proposals in Bayesian phylogenetics. *Syst Biol*, 57: 86–103
- Lepage T, Bryant D, Philippe H et al., 2007. A general comparison of relaxed molecular clock models. *Mol Biol Evol*, 24: 2669–2680
- Lewis P O, 2001. A likelihood approach to estimating phylogeny from discrete morphological character data. *Syst Biol*, 50: 913–925
- Liu L, 2008. BEST: Bayesian estimation of species trees under the coalescent model. *Bioinformatics*, 24: 2542–2543
- Liu L, Yu L, Kubatko L et al., 2009. Coalescent methods for estimating phylogenetic trees. *Mol Phylogenet Evol*, 53: 320–328
- Metropolis N, Rosenbluth A W, Rosenbluth M N et al., 1953. Equation of state calculations by fast computing machines. *J Chem Phys*, 21: 1087–1092
- Rannala B, Zhu T, Yang Z, 2012. Tail paradox, partial identifiability, and influential priors in Bayesian branch length inference. *Mol Biol Evol*, 29: 325–335
- Ronquist F, Huelsenbeck J P, 2003. MrBayes 3: Bayesian phylogenetic inference under mixed models. *Bioinformatics*, 19: 1572–1574
- Ronquist F, Klopstein S, Vilhelmsen L et al., 2012a. A total-evidence approach to dating with fossils, applied to the early radiation of the Hymenoptera. *Syst Biol*, 61: 973–999
- Ronquist F, Teslenko M, van der Mark P et al., 2012b. MrBayes 3.2: efficient Bayesian phylogenetic inference and model choice across a large model space. *Syst Biol*, 61: 539–542
- Stadler T, 2010. Sampling-through-time in birth-death trees. *J Theoret Biol*, 267: 396–404
- Thorne J L, Kishino H, 2002. Divergence time and evolutionary rate estimation with multilocus data. *Syst Biol*, 51: 689–702
- Van Noorden R, Maher B, Nuzzo R, 2014. The top 100 papers. *Nature*, 514: 550–553
- Xie W, Lewis P O, Fan Y et al., 2011. Improving marginal likelihood estimation for Bayesian phylogenetic model selection. *Syst Biol*, 60: 150–160
- Yang Z, 1994a. Estimating the pattern of nucleotide substitution. *J Mol Evol*, 39: 105–111
- Yang Z, 1994b. Maximum likelihood phylogenetic estimation from DNA sequences with variable rates over sites: approximate methods. *J Mol Evol*, 39: 306–314
- Yang Z, Rannala B, 2006. Bayesian estimation of species divergence times under a molecular clock using multiple fossil calibrations with soft bounds. *Mol Biol Evol*, 23: 212–226
- Zhang C, Rannala B, Yang Z, 2012. Robustness of compound Dirichlet priors for Bayesian inference of branch lengths. *Syst Biol*, 61: 779–784
- Zhang C, Stadler T, Klopstein S et al., 2016. Total-evidence dating under the fossilized birth-death process. *Syst Biol*, 65: 228–249